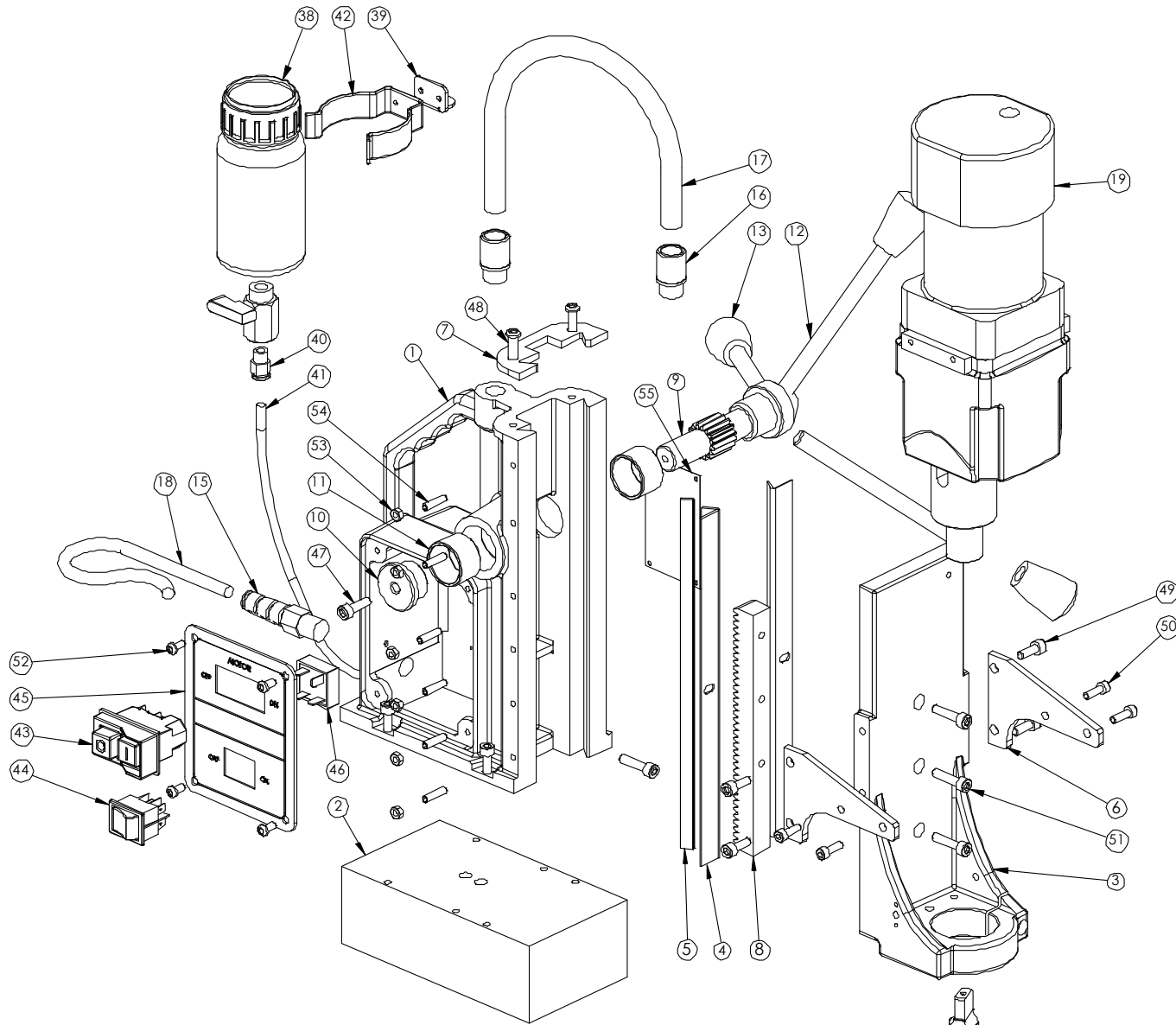
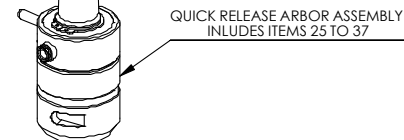


DC50 Assembly & Parts List



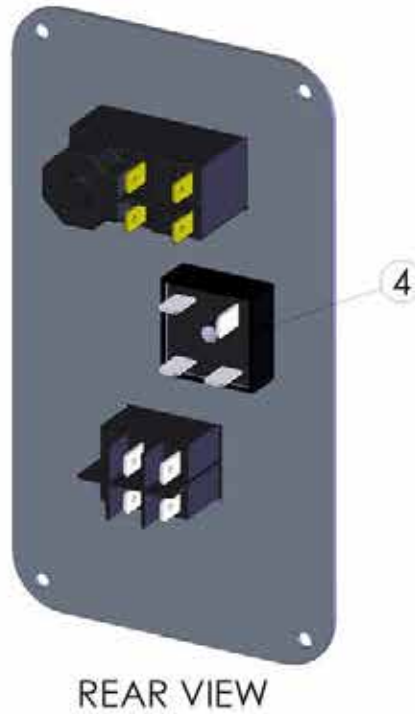
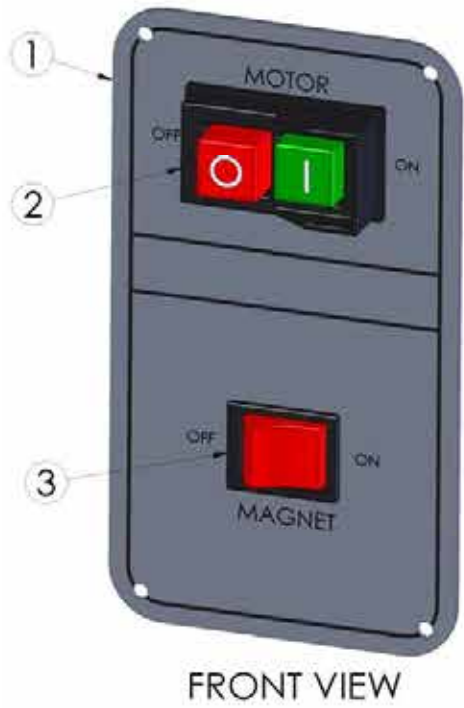
NOTE
GUARD DETAILS NOT SHOWN
IN EXPLODED VIEW

ITEM NO	DESCRIPTION	QTY
1	BODY	1
2	MAGNET BASE (MIDI)	1
3	CRADLE	1
4	BRASS STRIP (ANGLED)	2
5	G.F.S.	1
6	MOTOR SIDE BRACKET	2
7	TOP PLATE	1
8	RACK	1
9	PINION - (LARGE)	1
10	PINION END CAP (DEEP)	1
11	BUSH (PINION)	2
12	HANDLE (12mm SMALL)	3
13	HANDLE KNOB (12mm KNOCK ON)	3
14	WARNING PLATE	1
15	M16 STRAIN RELIEF CABLE GLAND	1
16	M16 PUSH FIT GLAND	1
17	12mm CONDUIT (BLACK)	1
18	BLACK RUBBER CABLE	1
19	EIBENSTOCK DRILL	1
20	SAFETY GUARD	1
21	M6 x 16 GUARD THUMB SCREW	2
22	M6 GUARD SPACER	2
23	PG9 PUSH FIT GLAND	1
24	SMALL 2 LEG GUARD GUIDE	2
25	QUICK RELEASE ARBOR COLLAR	1
26	QUICK REL ARBOR LOCK SHOE	1
27	Q/RELEASE COLLAR SPRING	1
28	QUICK REL ARBOR TOR SPRING	2
29	20mm O/D x 4mm NITRILE O RING	1
30	ARBOR SPRING (M/TAPER)	1
31	ARBOR EJECTION PLUG (M/TAPER)	1
32	38 O/D V INTERNAL CIRCLIP	1
33	2 M/T Q/R ARBOR BODY	1
34	OIL RING QUICK RELEASE	2
35	6mm PUSH FIT FITTING	1
36	BS216 O RING	1
37	M6 STOP ROD	1
38	SMALL OIL CUP ASSEMBLY	2
39	OILFEED BRACKET	1
40	1/8" BSP - 6mm PUSH FIT CONNECTION	1
41	6mm OIL PIPE (OIL FEED ASSY)	1
42	OIL CUP RETAINING CLIP	1
43	DRILL STOP/START SWITCH	1
44	MAGNET SWITCH - NCP PANEL	1
45	NCP SWITCH PLATE BLANK	1
46	25A - BRIDGE RECTIFIER	1
47	M6 x 20 CAP SCREW	1
48	M6 x 20 BUTTON HEAD SCREW	2
49	M6 x 16 CAP SCREW	4
50	M5 x 15 CAP SCREW	4
51	M6 x 25 CAP SCREW	4
52	M5 x 10 BUTTON HEAD SCREW	4
53	M5 NUT	6
54	M5 x 20 GRUB SCREW	7
55	WARNING PLATE	

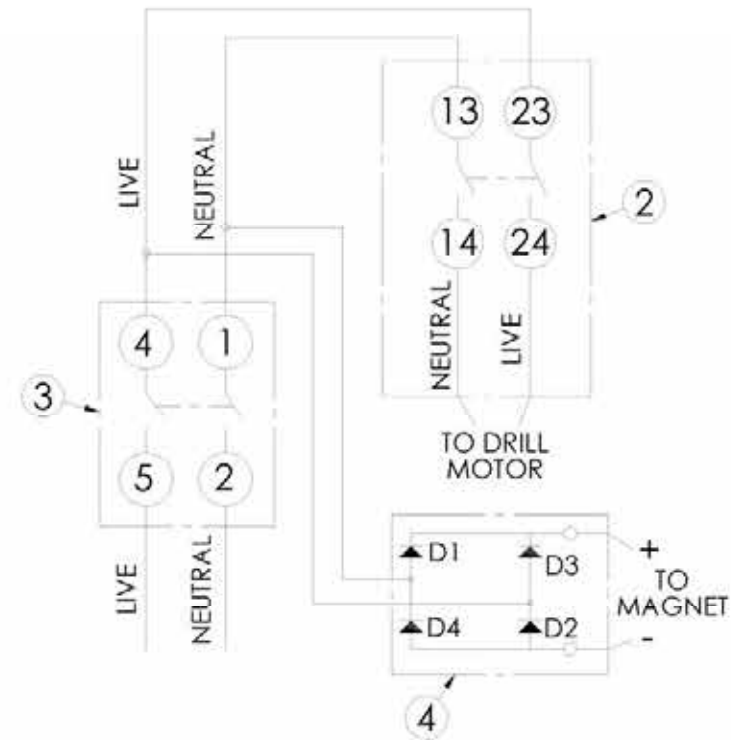


QUICK RELEASE ARBOR ASSEMBLY
INCLUDES ITEMS 25 TO 37

DC50 Switchplate (NCP Panel)

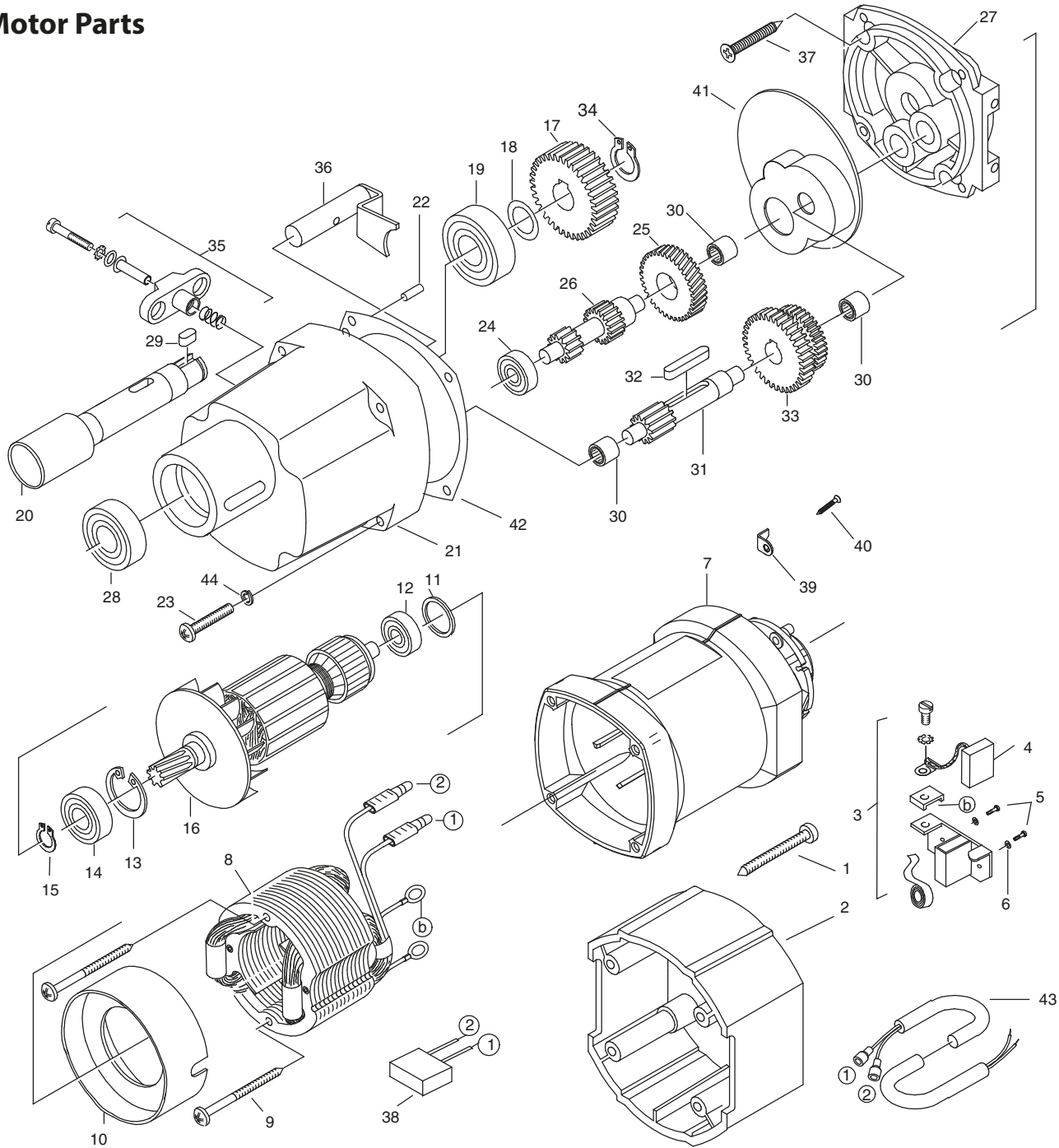


ITEM 4 TO BE BONDED TO REAR OF PLATE



ITEM NO.	QTY.	DESCRIPTION
1	1	NCP BLANK SWITCH PLATE - MED
2	1	DRILL STOP/START SWITCH-120v
3	1	MAGNET SWITCH-NCP PANEL
4	1	25A-BRIDGE RECTIFIER

DC50 Motor Parts



ITEM No	DESCRIPTION
1	Self tapping screw HC4.8x50
2	Drill Cap (var spd)
3	Complete brush holder
4	Carbon brush (SINGLE)
5	Screw ZM4x12
6	Washer B4
7	Motor Housing
8	Field Coil 110V
9	Self tapping screw C3.9 x 60
10	Fan Cover
11	O-Ring
12	608 z Bearing
13	Circlip 28/1.2
14	6001 2Z Bearing
15	Circlip 11/1
16	Armature 110V
17	Main Drive Gear
18	washer 15/22 x 0.2
19	6203 Bearing
20	Spindle MT2
21	Gear Box
22	Dowel 4 x 12
23	Screw
24	608 Bearing
25	Spur Gear
26	Twin Geared Shaft
27	Gear Plate
28	6904 Bearing
29	Key A5x5x12
30	HK0810 Bearing
31	Trailer Gear
32	Key A5x5x28
33	Double Gear
34	Circlip Ext 15mm
35	Gear Change Assembly
36	Gear Lever
37	C/SK screw
41	Gear Plate Shield
42	Gear Box Gasket